



Separation Specialists, Inc.

Oil and Water Separation Solutions - www.separationspecialists.com

Advanced Sealing Options

for Wemco Depurator units and other low pressure vessels.

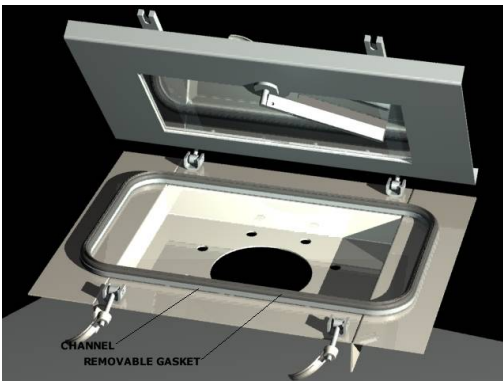
Why Upgrade your Sealing System?

With today's environmental awareness sealing is becoming an increasingly important concern for production vessels. At Separation Specialists we have responded to this demand by supplying advanced sealing options for flotation units and other process vessels. So whether your concern is a hazardous gas leak, fugitive emissions fines, or accelerated corrosion from oxygen intrusion review our solutions below and contact us to help you upgrade your sealing system.

Wemco Agitator End-Cap Mechanical Seal

The agitator seal is the most important on a Wemco unit. This seal helps protect the bottom bearing as well as prevent oxygen intrusion and hazardous gas emissions. Most units have inferior lip seals or rope-packing. Neither lip seals or rope-packing will eliminate leaks.

The solution is a high quality multiple spring mechanical seal from Chesterton. This seal is hydraulically balanced to reduce heat generation and the springs are isolated from the process to prevent clogging. The seal will not fret the shaft like lip seals and packing and only requires periodic greasing.



Channel Door & Window System

Separation Specialists' channel door and window system both provide excellent sealing and extended life. While either the window system or the channel door may be used separately, the best arrangement is to install the window system in a channel door.

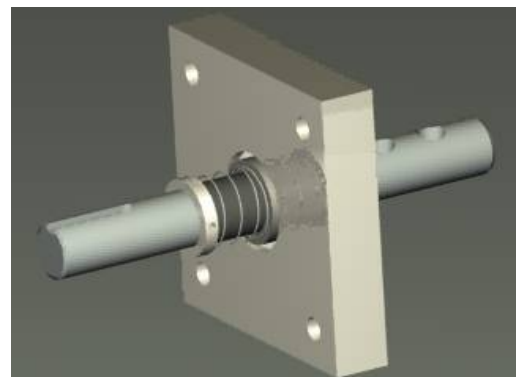
The channel is attached to the vessel and contains an easily replaceable gasket. All construction is stainless steel to increase operating lifetime. Pictured to the left is the channel attached to a flange adapter. The flange adapter is not required but may be used if the vessel surface is unsuitable for installation of the channel.

The window doesn't have penetrations through the door thus eliminating a source of leaks in previous designs. The window and channel door assembly has been tested beyond normal operating ranges of the Wemco unit ensuring reliable performance.

Skimmer End Plate Mechanical Seal

The skimmer end plate mechanical seal is the final seal in the upgrade package. The package includes a mechanical seal capable of handling the dry application at operating speeds. This eliminates the need for any lubrication of the seal resulting in maintenance free service.

The package includes the mechanical seal, shaft adapter, end plate, and guide bushing. Contact us for pricing and information regarding your application.



Contact Shan Davis: Tel: 888-323-8581 Fax: 661-323-8583 sdavis@separationspecialists.com